

## Specifications

Insulation Resistance: 500MΩ at 150V DC  
 Withstanding Voltage: 700V AC for 1 minute  
 Contact Resistance: 30mΩ max. at 10mA and 20mV  
 Operating Temp. Range: -25°C to +85°C  
 Reflow-soldering Temp.: 220°C for 60 seconds  
 Mating Cycles: 20 insertions maximum  
 Allowable Torque (max.):  
 - for 1-time screw connection = max 0.147 Nm  
 - for repetitive screw connection = min 0.078 Nm  
 max 0.098 Nm

## Adapter Part Number

ICP-100-4-1 (with 2 x M2.5 - 12.0)

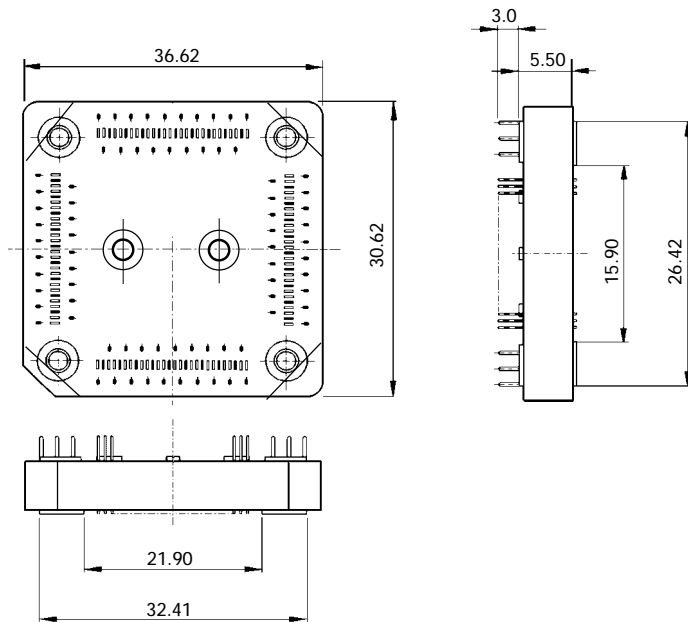
## Compatible Socket (Part No.)

IC149-100-KS11113-0 (w/o pos. pins)  
 IC149-100-KS11113-1 (with pos. pins)

## Materials and Finish

Housing: PTES, glass filled UL94V-0  
 Contact: Phosphor Bronze  
 Plating: Au 0.3μm min. over 2.5 ~ 4.5μm Ni

## Outline Adapter Dimensions (Reference Only)

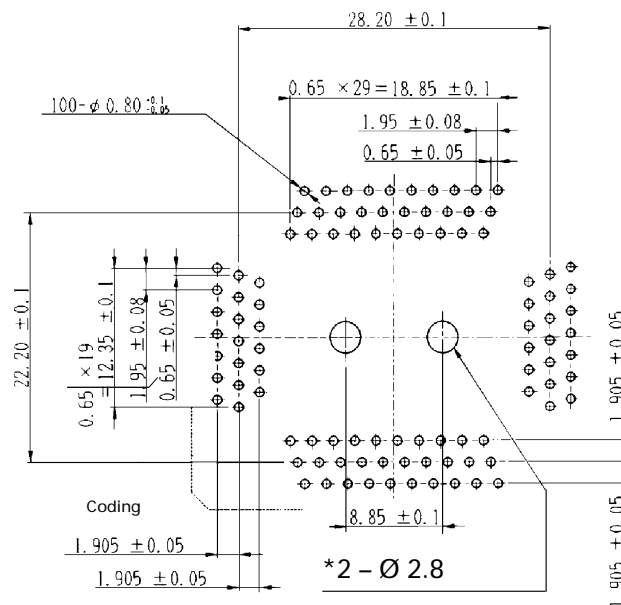


### Remarks

1. Ensure a clean contact area. Fluxes, dust and other impurities may cause corrosion and contact problems.
2. Careful attention must be taken when fixing the Adapter, since it is made from thermoplastic material. By exceeding the maximum torque a perfect performance can no longer be guaranteed.

## Adapter PCB-Layout (IC149-100-KS11113-\*)

Top View from Soldering Side



\* PCB thickness from 1.2 - 3.4mm

## Specifications

Insulation Resistance: 500MΩ at 150V DC  
 Withstanding Voltage: 700V AC for 1 minute  
 Contact Resistance: 30mΩ max. at 10mA and 20mV  
 Operating Temp. Range: -25°C to +85°C  
 Reflow-soldering Temp.: 220°C for 60 seconds  
 Mating Cycles: 20 insertions maximum  
 Allowable Torque (max.):  
 - for 1-time screw connection = max 0.147 Nm  
 - for repetitive screw connection = min 0.078 Nm  
 max 0.098 Nm

## Adapter Part Number

ICP-100-4-4 (with 4 x M2.0 - 12.0)

## Compatible Socket (Part No.)

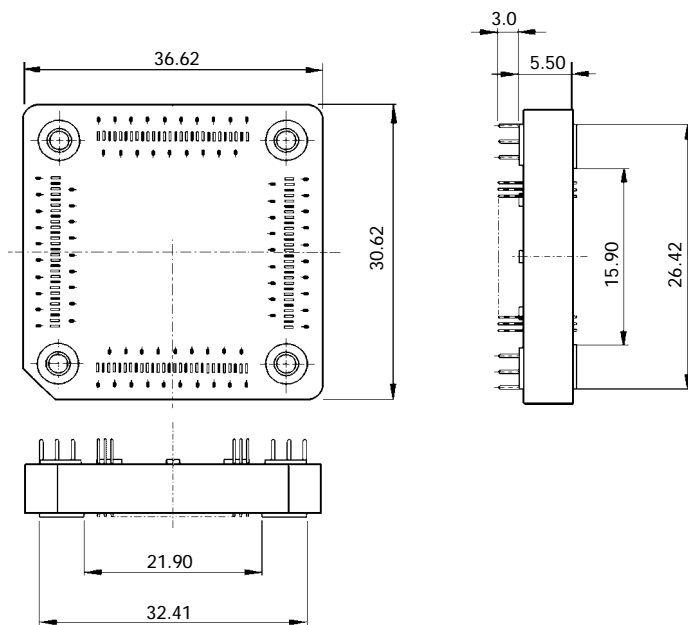
IC149-100-014-B5 (w/o pos. pins)

IC149-100-114-B5 (with pos. pins)

## Materials and Finish

Housing: PTES, glass filled UL94V-0  
 Contact: Phosphor Bronze  
 Plating: Au 0.3μm min. over 2.5 ~ 4.5μm Ni

## Outline Adapter Dimensions (Reference Only)

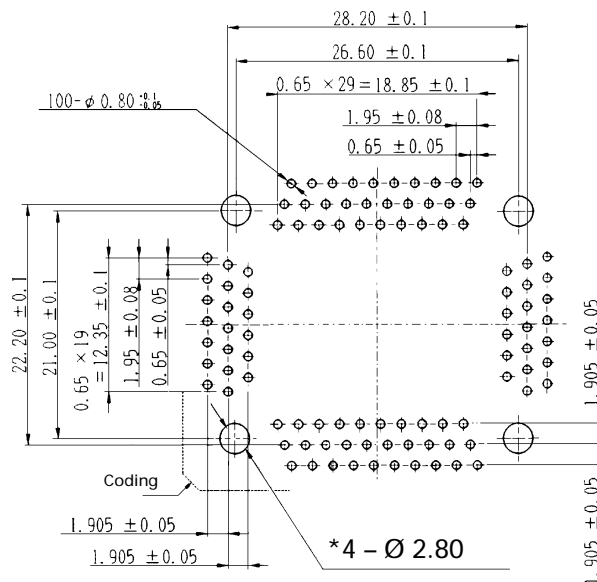


### Remarks

1. Ensure a clean contact area. Fluxes, dust and other impurities may cause corrosion and contact problems.
2. Careful attention must be taken when fixing the Adapter, since it is made from thermoplastic material. By exceeding the maximum torque a perfect performance can no longer be guaranteed.

## Adapter PCB-Layout (IC149-100-\*14-B5)

Top View from Soldering Side



\* PCB thickness from 1.2 - 3.4mm

## Specifications

Insulation Resistance: 500MΩ at 150V DC  
 Withstanding Voltage: 700V AC for 1 minute  
 Contact Resistance: 30mΩ max. at 10mA and 20mV  
 Operating Temp. Range: -25°C to +85°C  
 Reflow-soldering Temp.: 220°C for 60 seconds  
 Mating Cycles: 20 insertions maximum  
 Allowable Torque (max.):  
 - for 1-time screw connection = max 0.147 Nm  
 - for repetitive screw connection = min 0.078 Nm  
 max 0.098 Nm

## Adapter Part Number

ICP-100-5

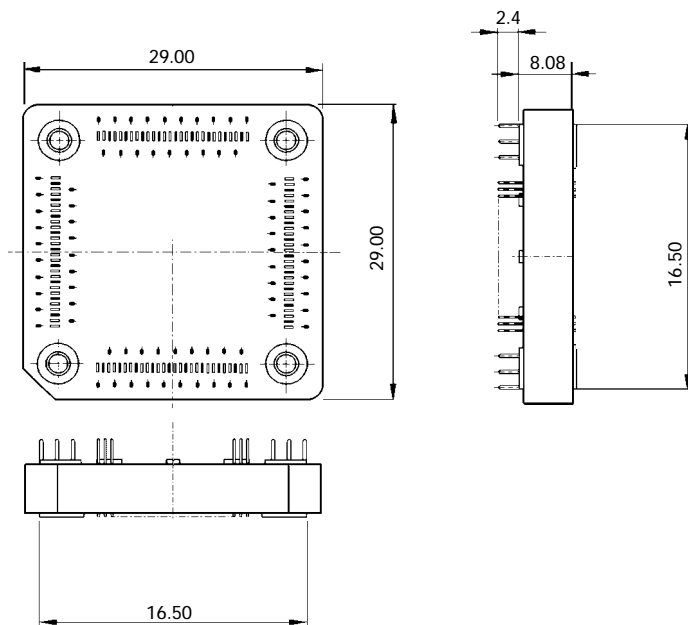
## Compatible Socket (Part No.)

IC149-100-025-B5 (w/o pos. pins)  
 IC149-100-125-B5 (with pos. pins)

## Materials and Finish

Housing: PTES, glass filled UL94V-0  
 Contact: Phosphor Bronze  
 Plating: Au 0.3μm min. over 2.5 ~ 4.5μm Ni

## Outline Adapter Dimensions (Reference Only)

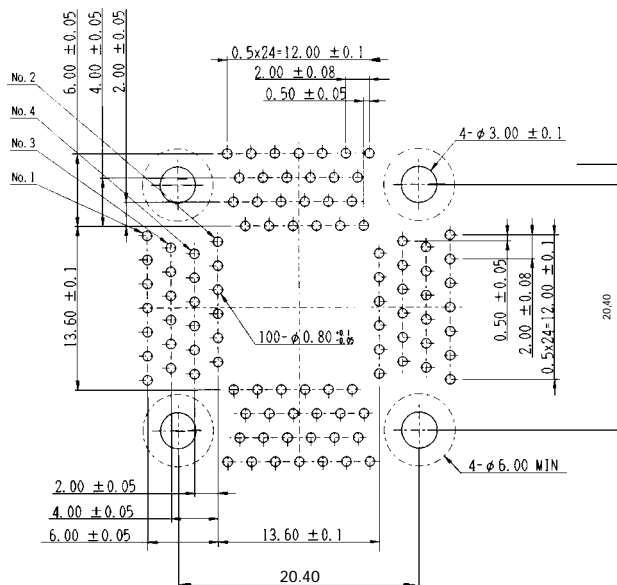


### Remarks

1. Ensure a clean contact area. Fluxes, dust and other impurities may cause corrosion and contact problems.
2. Careful attention must be taken when fixing the Adapter, since it is made from thermoplastic material. By exceeding the maximum torque a perfect performance can no longer be guaranteed.

## Adapter PCB-Layout (IC149-100-\*25-B5)

Top View from Soldering Side



Note: No conduits within this hatched area.

## Specifications

Insulation Resistance: 500MΩ at 150V DC  
 Withstanding Voltage: 700V AC for 1 minute  
 Contact Resistance: 30mΩ max. at 10mA and 20mV  
 Operating Temp. Range: -25°C to +85°C  
 Reflow-soldering Temp.: 220°C for 60 seconds  
 Mating Cycles: 20 insertions maximum  
 Allowable Torque (max.):  
 - for 1-time screw connection = max 0.147 Nm  
 - for repetitive screw connection = min 0.078 Nm  
 max 0.098 Nm

## Adapter Part Number

ICP-100-6

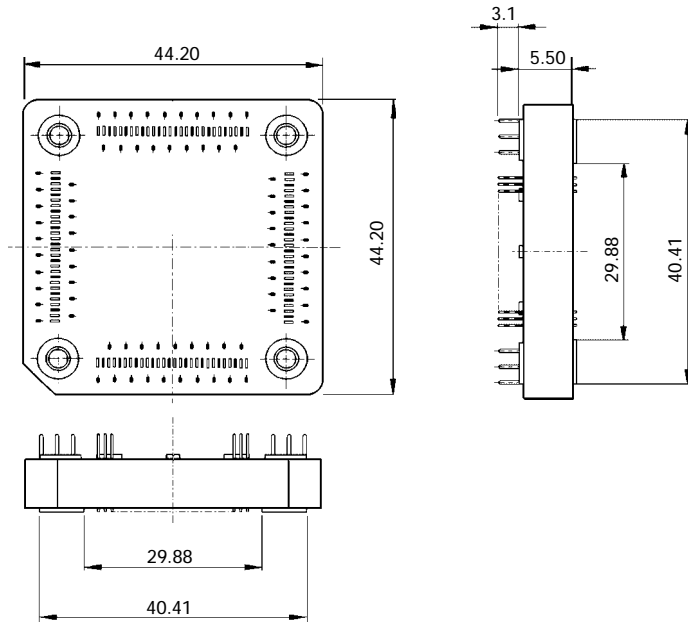
## Compatible Socket (Part No.)

IC149-100-028-B5 (w/o pos. pins)  
 IC149-100-128-B5 (with pos. pins)

## Materials and Finish

Housing: PTES, glass filled UL94V-0  
 Contact: Phosphor Bronze  
 Plating: Au 0.3µm min. over 2.5 ~ 4.5µm Ni

## Outline Adapter Dimensions (Reference Only)



### Remarks

- Ensure a clean contact area. Fluxes, dust and other impurities may cause corrosion and contact problems.
- Careful attention must be taken when fixing the Adapter, since it is made from thermoplastic material. By exceeding the maximum torque a perfect performance can no longer be guaranteed.

Adapter PCB-Layout (IC149-100-\*28-B5)

Top View from Soldering Side

